

If you are getting a message like the one below, follow instructions to download the PFD-LG.PDF form.

www.elec.state.nj.us/pdffiles/forms/compliance/pfd1_LG.pdf

To view the full contents of this document, you need a later version of the PDF viewer. You can upgrade to the latest version of Adobe Reader from www.adobe.com/products/acrobat/readstep2.html

For further support, go to www.adobe.com/support/products/acrreader.html

To download the PFD-LG.PDF form right click on the link and click on "Save target as" or "Save link as"

Form E-1 Note: A candidate is not required to file 48-hour expenditure notices to report activity for their own campaign.

Form R-1 Report of Contributions and Expenditures
Instructions for filing the Form R-1

Form PFD-1 Personal Financial Disclosure Statement for Governor, Lt. Governor, Senate and
Instructions for filing the Form PFD-1

Form COC-B Report to Service of Process and Submission - Bank Information

Form COC-C Report to Service of Process and Submission - Committee

Reporting forms and Instructions

This manual is not to be used for reporting by a political committee in existence for only one or two election cycles. If you have any questions concerning whether your group should file, please contact the Compliance staff of the Commission at (609) 292-8700, or (888) 313-ELEC (3532).

Manual

Form PC Report and Designation of Campaign Treasurer and Depository

Form DX Campaign Treasurer and Depository

Form C-1 Campaign Treasurer Information

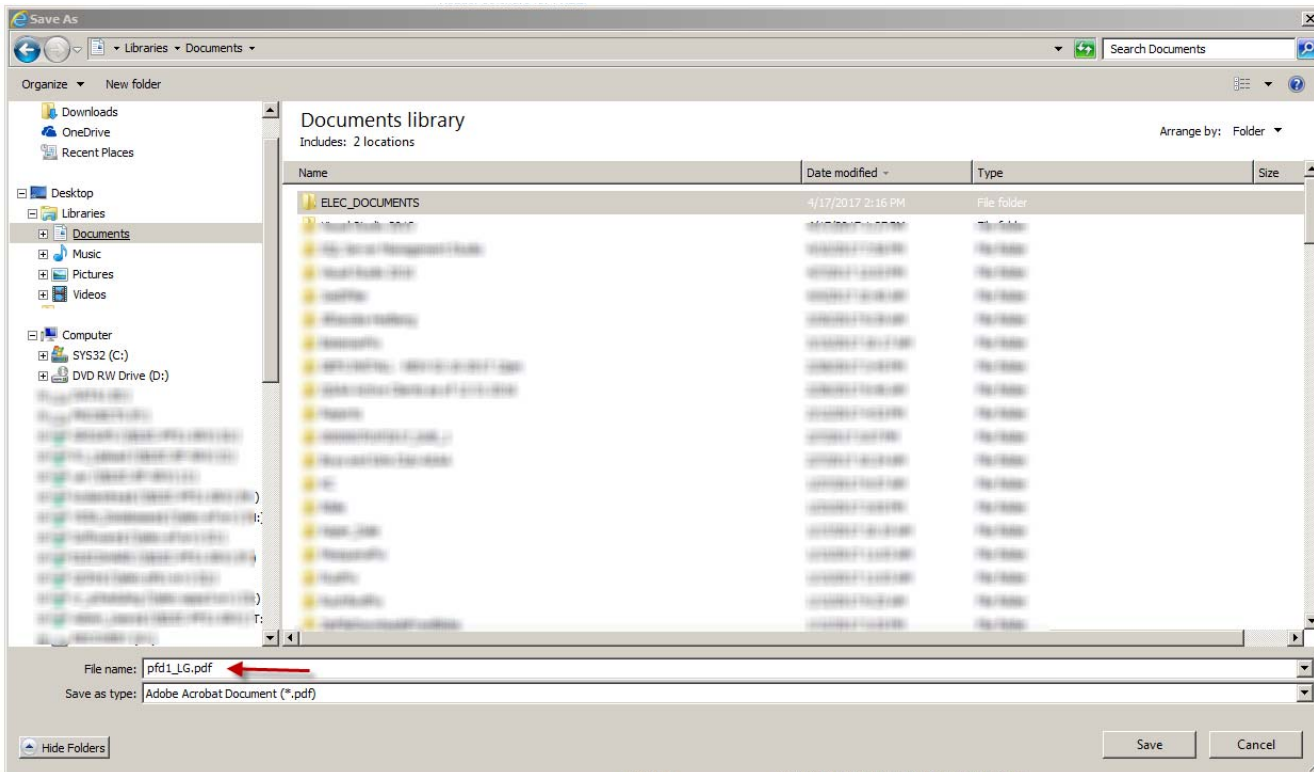
Form E-1 Expenditure Information

Form R-1 Contributions and Expenditures
Instructions for filing the Form R-1

Reporting by committees

Recall Packet

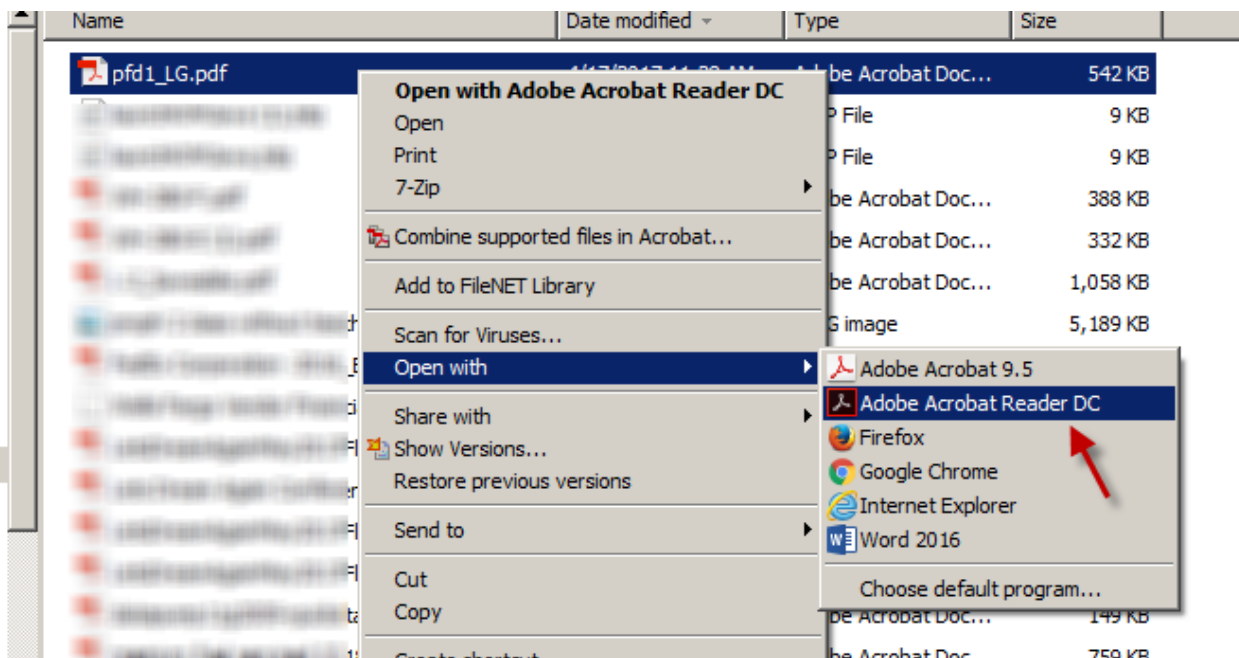
Save the PDF file to your Computer



Go to the location where the file was saved.

DO NOT TRY TO OPEN THE FILE FROM THE WEB BROWSER

Right click the file and go to “Open with” and click on Adobe Acrobat Reader DC or similar



Now the form will be able to be filled in. Please note that if the Form is opened in any other PDF Reader it WILL not work correctly.